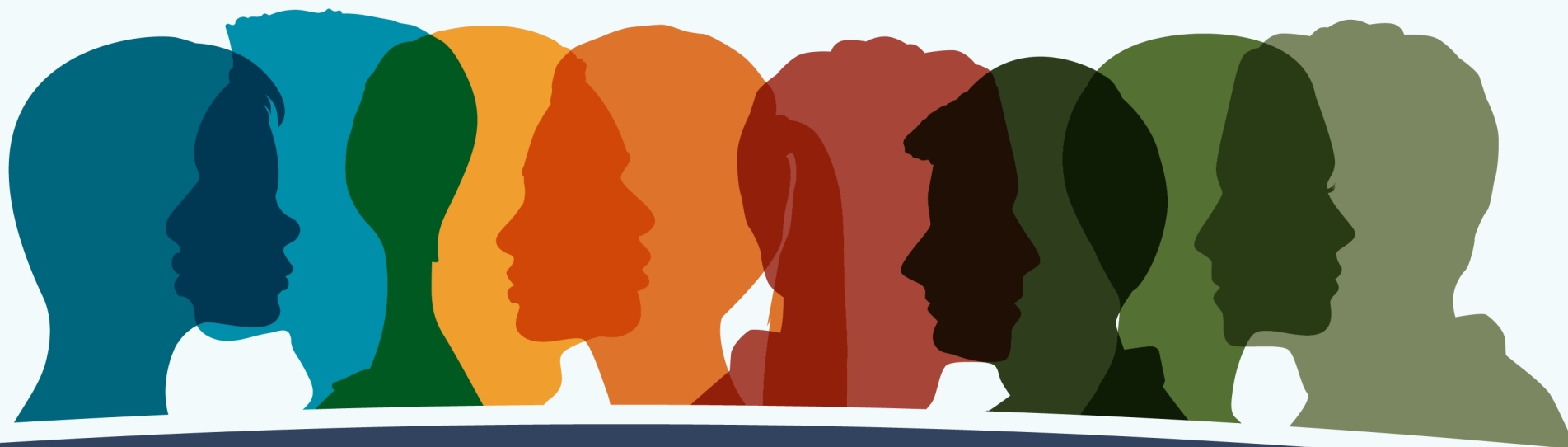


#SWDSS



NIH Scientific Workforce Diversity Seminar Series

**Tuskegee University – Mission-driven Transformative Research
in Health Disparities for Minority Populations**

S. Keith Hargrove, PhD

Provost & Sr. VP for Academic Affairs

November 30, 2023

Origin of Historically Black Colleges & Universities & Their Impact in STEM



- First HBCU founded in 1837, Cheyney University
- 1865 – 1900 Most HBCUs were established either via state or private
- 1862 – 1st Morrill Act established land grant colleges in North and West
- 1890 – 2nd Morrill Act created many HBCUs due to limited educational opportunities
- Currently 101 HBCUs exist in the United States
- HBCUs graduate about 20% of all African Americans & ONE THIRD of STEM Graduates
- *One Third of STEM PhDs*....Received their BS from an HBCU
- Recent Federal Report of HBCU Underfunding exceed \$12+ Billion



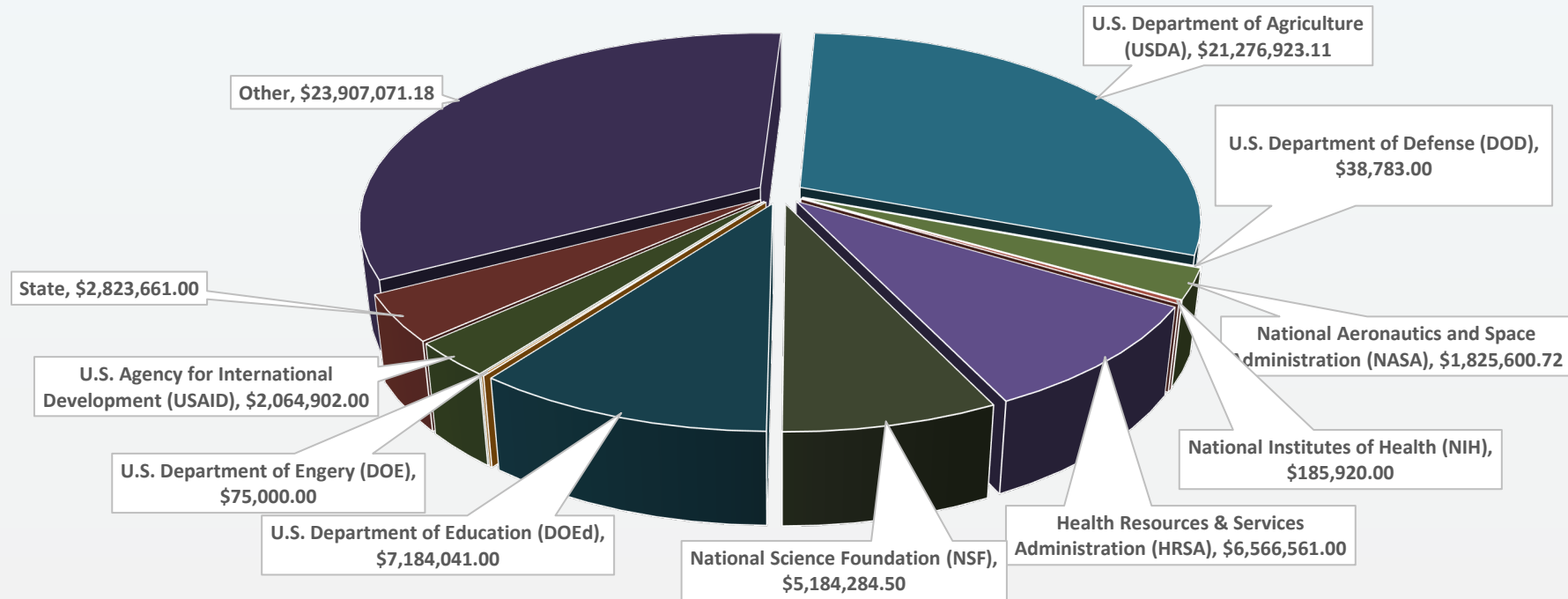
Tuskegee University

- Founded in 1881 by **Booker T. Washington**
- Approximately 3000 enrolled, **emphasis on STEM degrees**
- The only HBCU with a fully accredited College of Veterinary Medicine that offers the Doctoral Degree, and produces **over 75% of the African-American veterinarians in the world.**
- The only HBCU in the nation designated as the location for **National Center for Bioethics in Research and Health Care.**
- The only college or university campus in the nation to be designated a **National Historic Site by the U.S. Congress.**
- **www.Tuskegee.edu**



Tuskegee University's Current Research - \$71M

- U.S. Department of Agriculture (USDA)
- National Aeronautics and Space Administration (NASA)
- Health Resources & Services Administration (HRSA)
- U.S. Department of Education (DOEd)
- U.S. Agency for International Development (USAID)
- Other
- U.S. Department of Defense (DOD)
- National Institutes of Health (NIH)
- National Science Foundation (NSF)
- U.S. Department of Energy (DOE)
- State



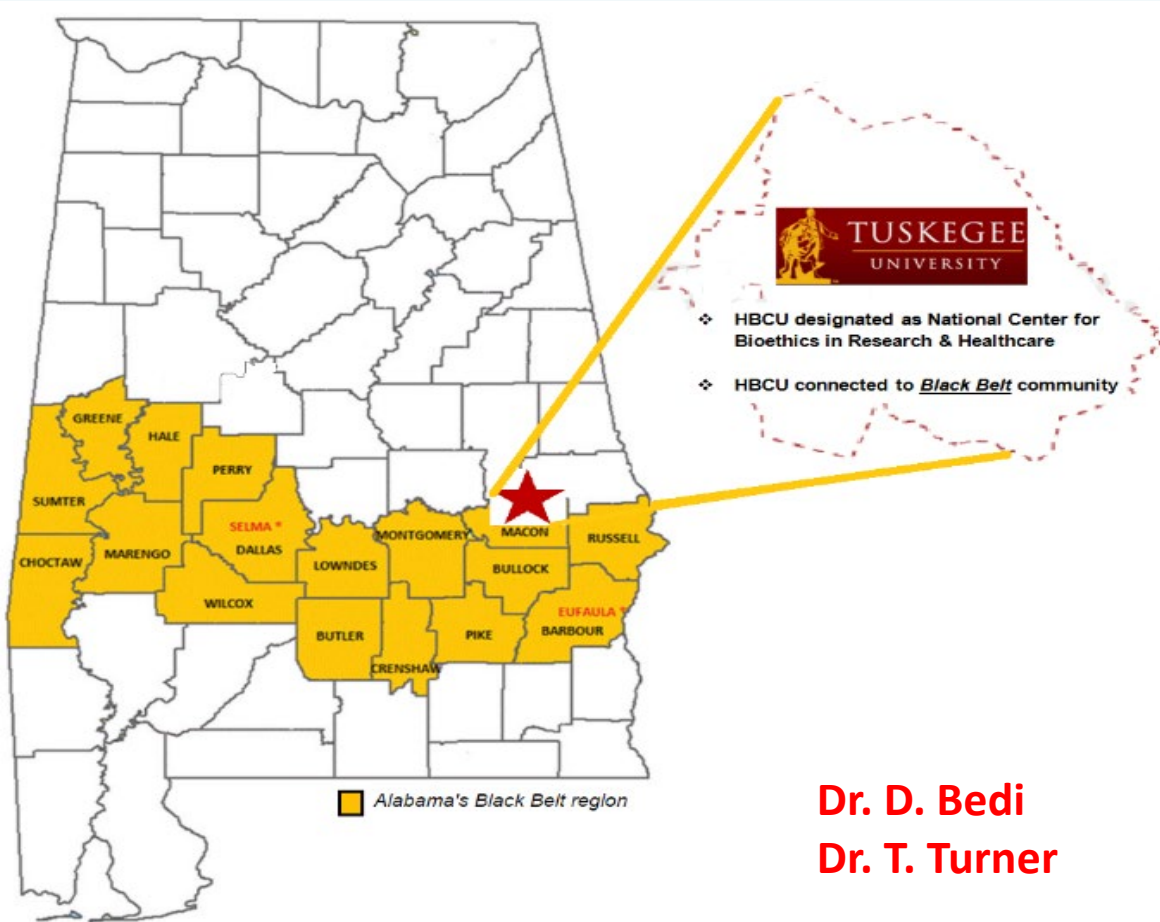
Tuskegee University Core Research Competencies

• Agricultural Sciences	• Energy
• Animal and Poultry Sciences	• Environmental, Natural Resources and Plant Sciences
• Biological Sciences	• Geospatial and Climate Change
• Biomedical Research	• International Research and Development
• Cancer Research	• Materials Science and Engineering
• Ceramics, Metal, and Polymers & Composites	• Public Health
• Computer Science and Engineering and Information Security	• Semiconductors and Microelectronics
• Food and Nutritional Sciences	• Veterinary Services

Tuskegee University – Health Disparities NIH \$25M Award

Center for Biomedical Research (CBR)

Research Center for Minority Institutions (RCMI)

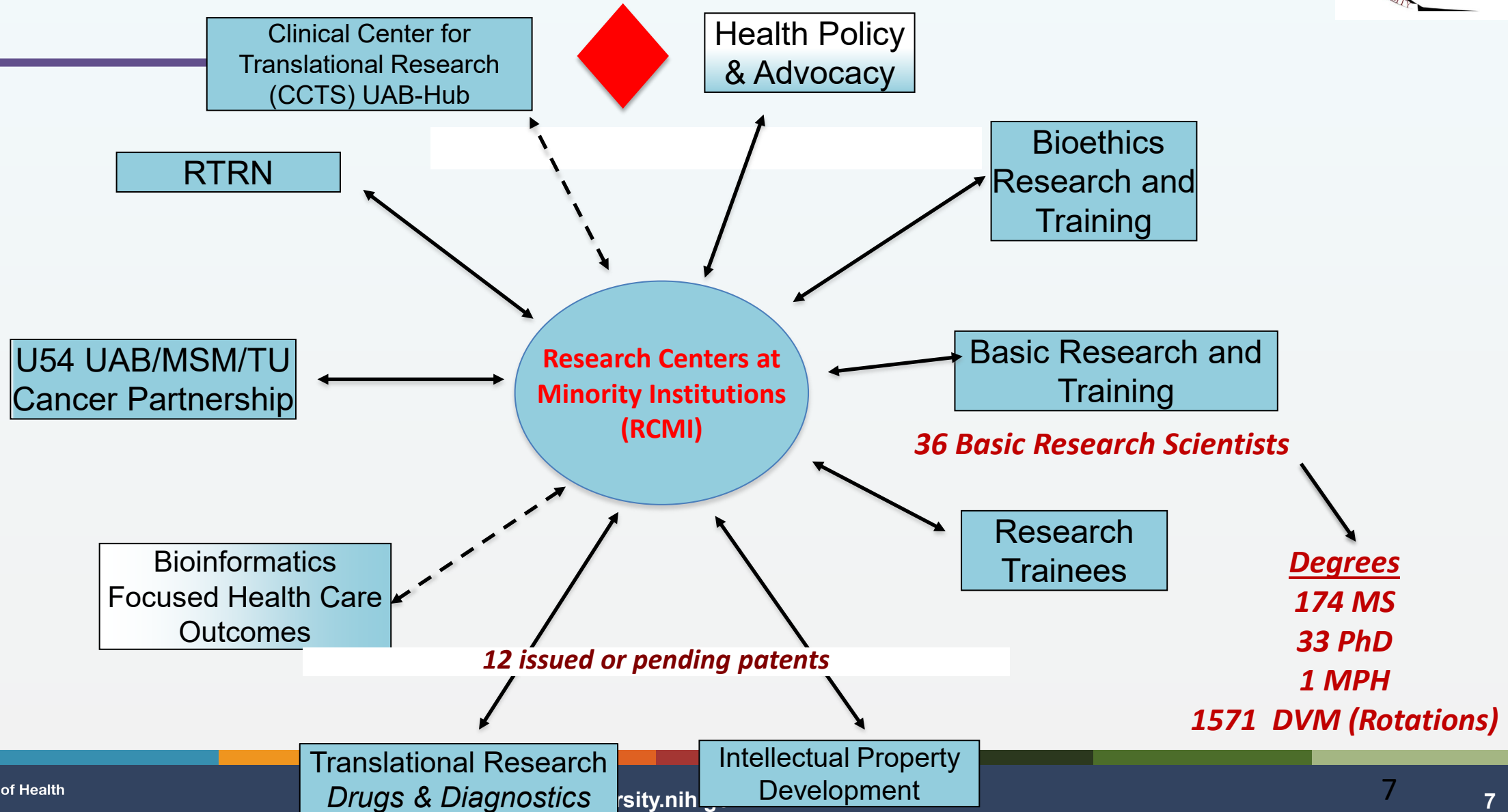


Dr. D. Bedi
Dr. T. Turner

- Focus: Obesity, Breast & Cervical Cancer
- Strengthen the biomedical **research capacity** of TU by funding **research projects, at Full and Pilot levels**, that have the potential of developing into competitive grant proposals capable of receiving **extramural funding**.
- Establish, maintain, and sustain a high-quality **research infrastructure** to support biomedical research conducted by TU faculty.
 - Shared Core Facilities and Support Services
 - Biomedical Instrumentation Cores
 - Bioinformatics Support Services
 - Biostatistics Support Services
 - Bioethics Support Services (– Including Training in Responsible Conduct of Research –)
- Establish relationships, build trust, and engage **local communities** and **community-based organizations** to:
 - Educate community members on health issues that affect them
 - Learn from research findings directly related to health disparities impacting the community



Interconnectivity of RCMI with other NIH Funded Awards





Thank You!

