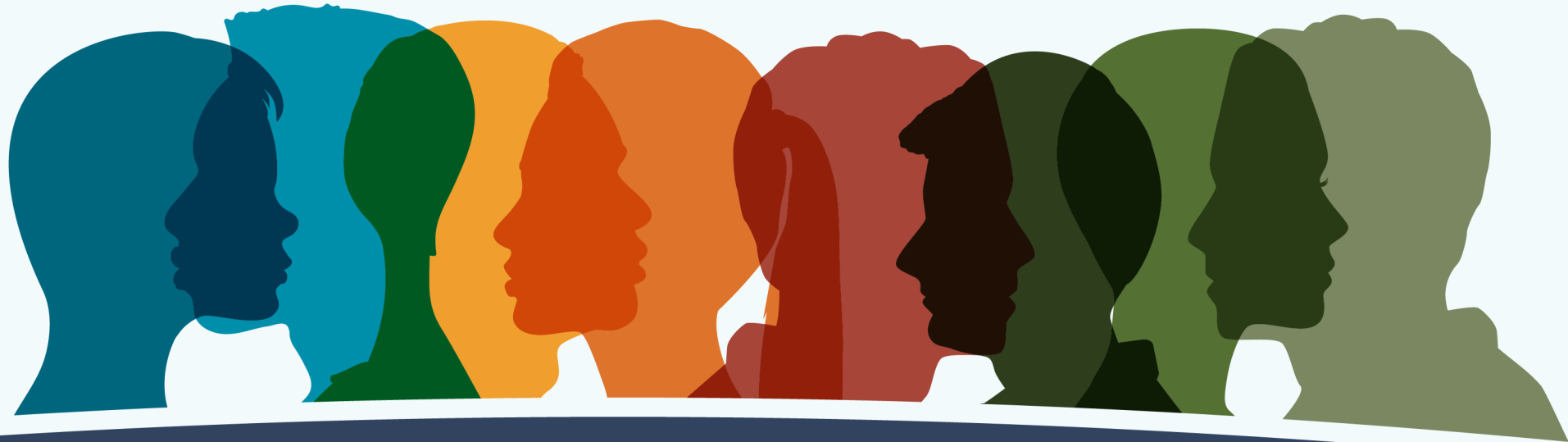


#SWDSS



NIH Scientific Workforce Diversity Seminar Series

How Are Institutions Transformed to Foster Cultures of Inclusive Excellence?

June 20, 2024



diversity.nih.gov

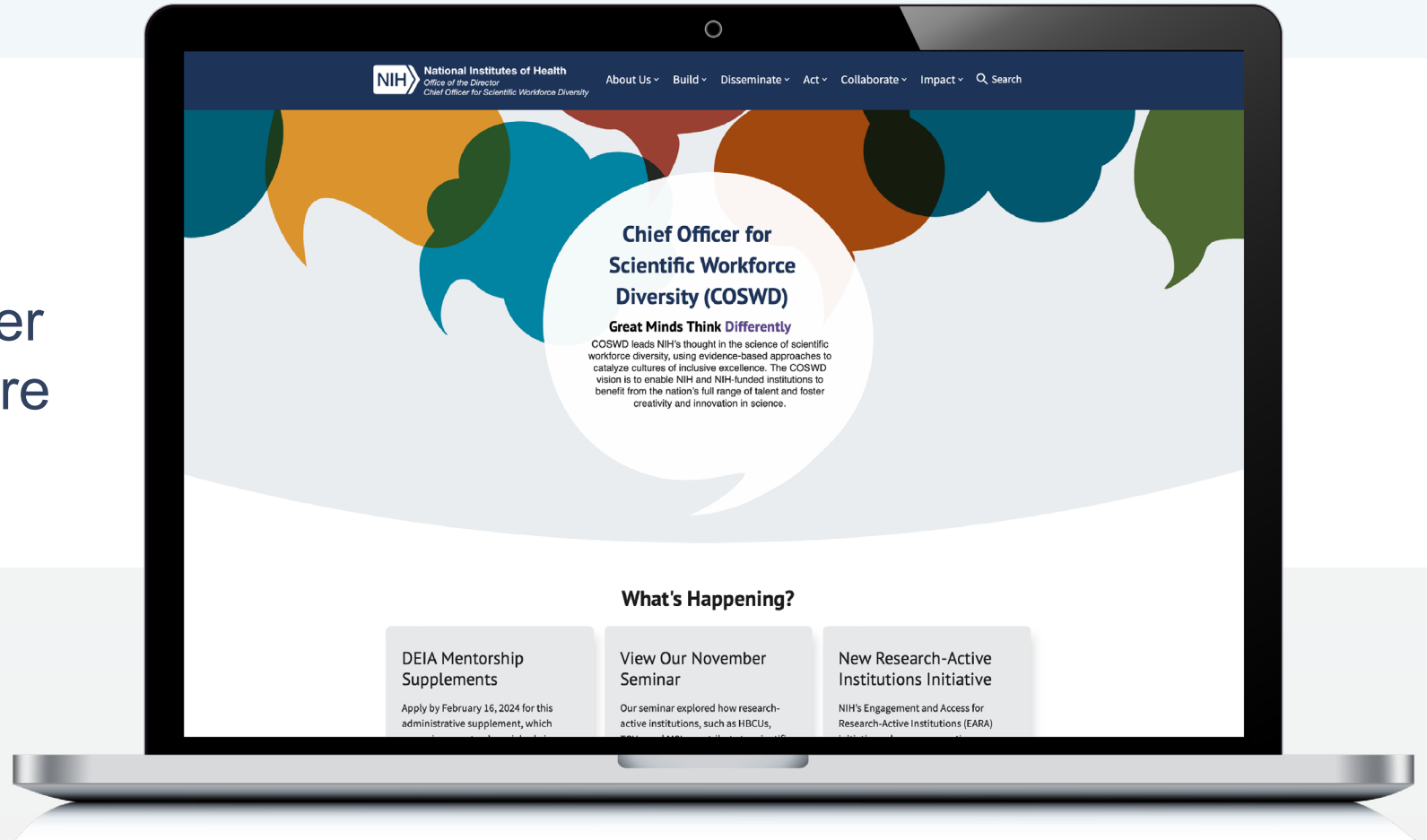


National Institutes of Health
Office of the Director
Chief Officer for Scientific Workforce Diversity



Introducing the Updated #COSWD Website

Explore our website for resources and research. Navigate with ease, discover our activities, and learn more about COSWD.



diversity.nih.gov

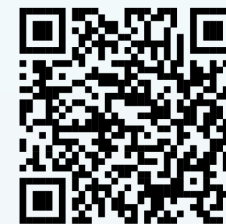
Watch our new video to learn about the EARA initiative



Scan to visit the EARA video

[https://diversity.nih.gov/sites/default/files/
media-files/video/EARA-full-video-new.mp4](https://diversity.nih.gov/sites/default/files/media-files/video/EARA-full-video-new.mp4)

Thank you for joining. This event will begin momentarily.



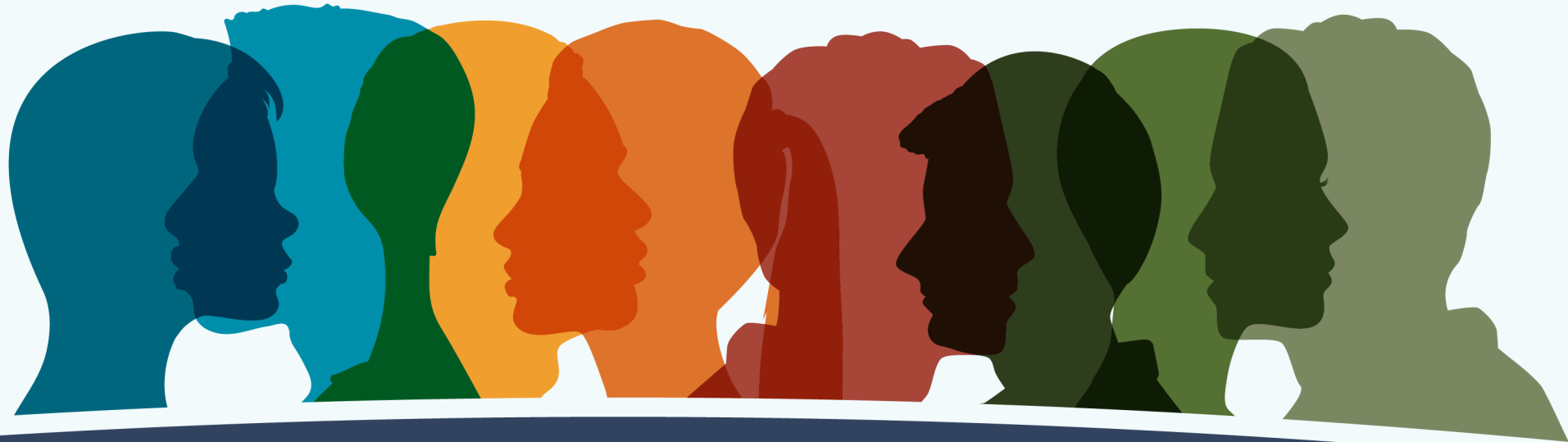
Resources from Past SWDSS Seminars

Looking for resources to promote inclusive excellence? Visit the SWDSS webpage to find:

- Proceedings
 - Reference lists for each topic covered
- Presentation materials
- Video recordings

Implicit Bias · Anti-Racism · Cohort Recruitment · Diversity in Science · Diversity in Pharma · Diversity Supplements · Mentoring · Research-Active Institutions · Team Science

#SWDSS



NIH Scientific Workforce Diversity Seminar Series

How Are Institutions Transformed to Foster Cultures of Inclusive Excellence?

June 20, 2024



diversity.nih.gov



National Institutes of Health
Office of the Director
Chief Officer for Scientific Workforce Diversity



Watch our video
to learn about
COSWD's mission



diversity.nih.gov/sites/default/files/media-files/video/coswd-full-video.mp4



Latest SWDSS: March 2024

How Does Diversity Impact Innovation in Team Science?

Visit the SWDSS Webpage

Proceedings
Coming soon!



Tung Nguyen, M.D.

Associate Vice Chancellor for
Research – Inclusion, Diversity,
Equity, and Anti-Racism,
University of California, San Francisco



Kelly Vere, MBE

Director of Technical Strategy,
University of Nottingham, England



Zanthia Wiley, M.D.

Associate Professor of Medicine,
Division of Infectious Diseases,
Emory University Hospital Midtown,
Atlanta, Georgia



UK Research
and Innovation

TODAY'S SPEAKERS



Alison Gammie, Ph.D.

Director of the Division of Training, Workforce Development, and Diversity, National Institute of General Medical Sciences, NIH



Lea Vacca Michel, Ph.D.

Professor, School of Chemistry and Materials Science, Director of Diversity, Equity, and Inclusion Initiatives for the College of Science, Rochester Institute of Technology



**Elizabeth Ofili, M.D.,
M.P.H., FACC**

Professor of Medicine (Cardiology), Morehouse School of Medicine
Chief Medical Officer, Morehouse Choice ACO



**Blanton S. Tolbert,
Ph.D.**

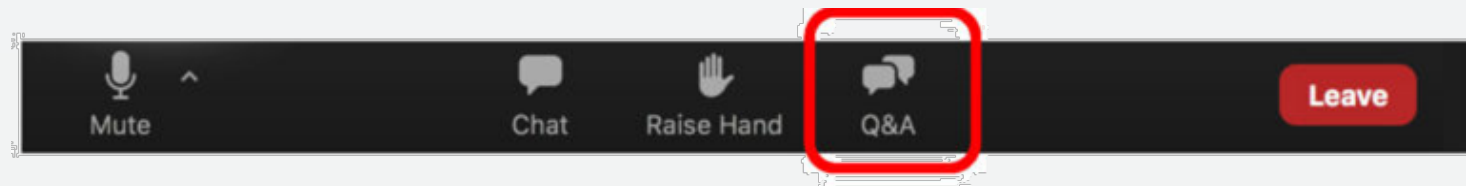
Vice President of Science Leadership and Culture, Howard Hughes Medical Institute

nih.zoomgov.com/webinar/register/9517129501424/WN_xW4mVdzYTrm97BUk3EfmpA



HOUSEKEEPING ITEMS

- **Copy of the presentation materials?** Visit diversity.nih.gov to access the speakers' slides.
- **Recording of the event?** The recording will be posted on our website within the next several business days.
- **Questions?** Leverage the Q&A feature in the toolbar to submit your questions.
 - Please note that we will not have time to get to all questions.
 - We identified common themes from questions submitted via the registration form.



- **Need technical support?** Please email our host at Aryana.Goins@icfnext.com.



POLL



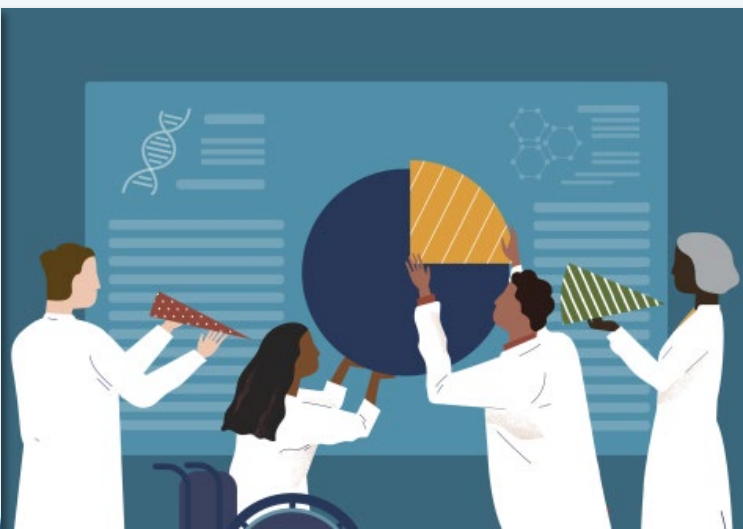
AND THAT'S A WRAP!

FY2023-2024 SWDSS Season



**How Do Research-Active
Institutions Impact the Diversity of
the Scientific Workforce?**

November 2023



**How Does Diversity Impact
Innovation in Team
Science?**

March 2024



**How Are Institutions Transformed
to Foster Cultures of Inclusive
Excellence?**

June 2024

How Do Diverse Perspectives Enhance Data Science Outcomes?

SAVE THE DATE: Thursday, October 17, 2024, 1:30 p.m.–3:00 p.m. ET

- Strategies to address bias in data science and increase diverse subject participation
- Benefits of inclusive environment and diverse perspectives of data science researchers and data sets
- How diverse representation enhances machine learning and artificial intelligence accuracy

Visit the SWDSS
Webpage



Scan to share
your feedback



SHARE YOUR THOUGHTS

Please share your thoughts on this seminar using our **feedback form**.





GREAT MINDS THINK DIFFERENTLY

CONNECT WITH US!

 Sign up for our [quarterly newsletter](#) and visit our [COSWD blog](#) for twice monthly updates

 Email us at SWD_Talks@nih.gov

 Follow us on [LinkedIn](#):

- [COSWD – @NIH Chief Officer for Scientific Workforce Diversity](#)
- [UNITE – @NIH UNITE Initiative](#)

 Follow us on [X \(Twitter\) @NIH COSWD](#)



National Institutes of Health

Office of the Director

Chief Officer for Scientific Workforce Diversity

diversity.nih.gov





Scan to share
your feedback



Our team thanks you for
| joining us for this seminar on
inclusive excellence!



diversity.nih.gov



[@NIH COSWD](https://twitter.com/NIH_COSWD)



[@NIH Chief Officer for Scientific Workforce Diversity](https://www.linkedin.com/company/nih-chief-officer-for-scientific-workforce-diversity)



National Institutes of Health
*Office of the Director
Chief Officer for Scientific Workforce Diversity*