



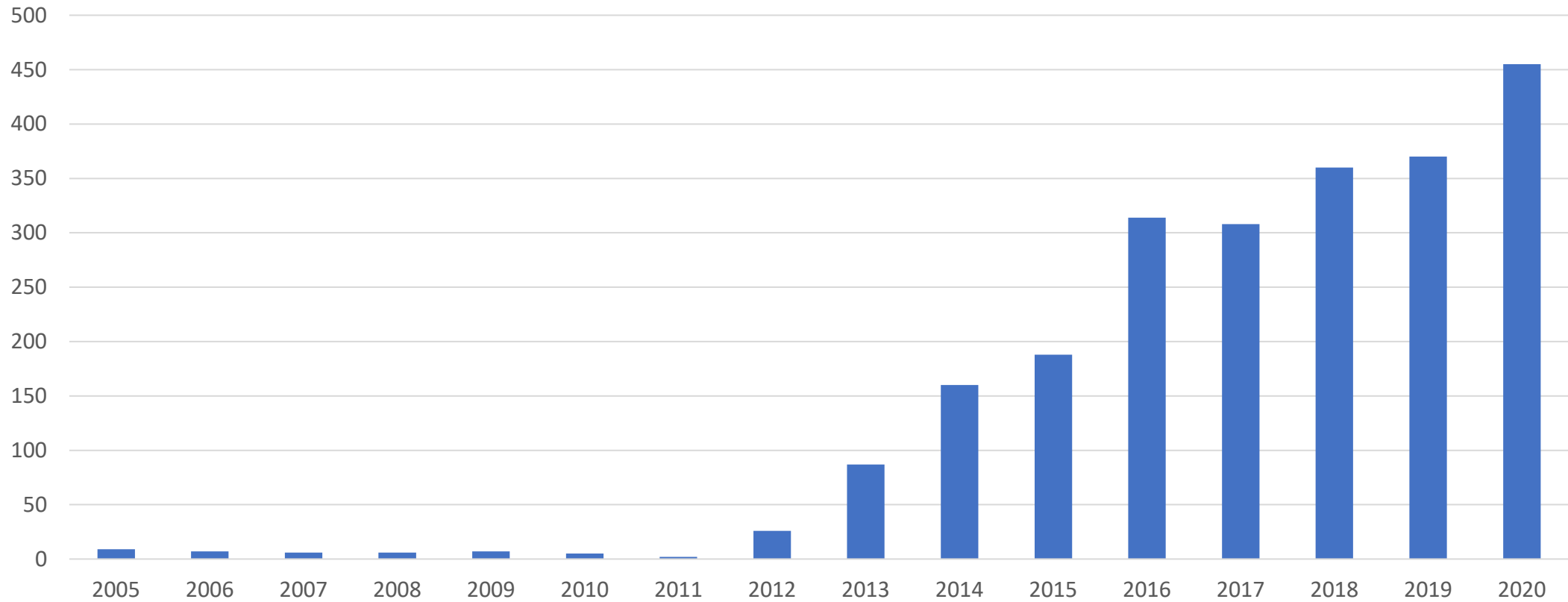




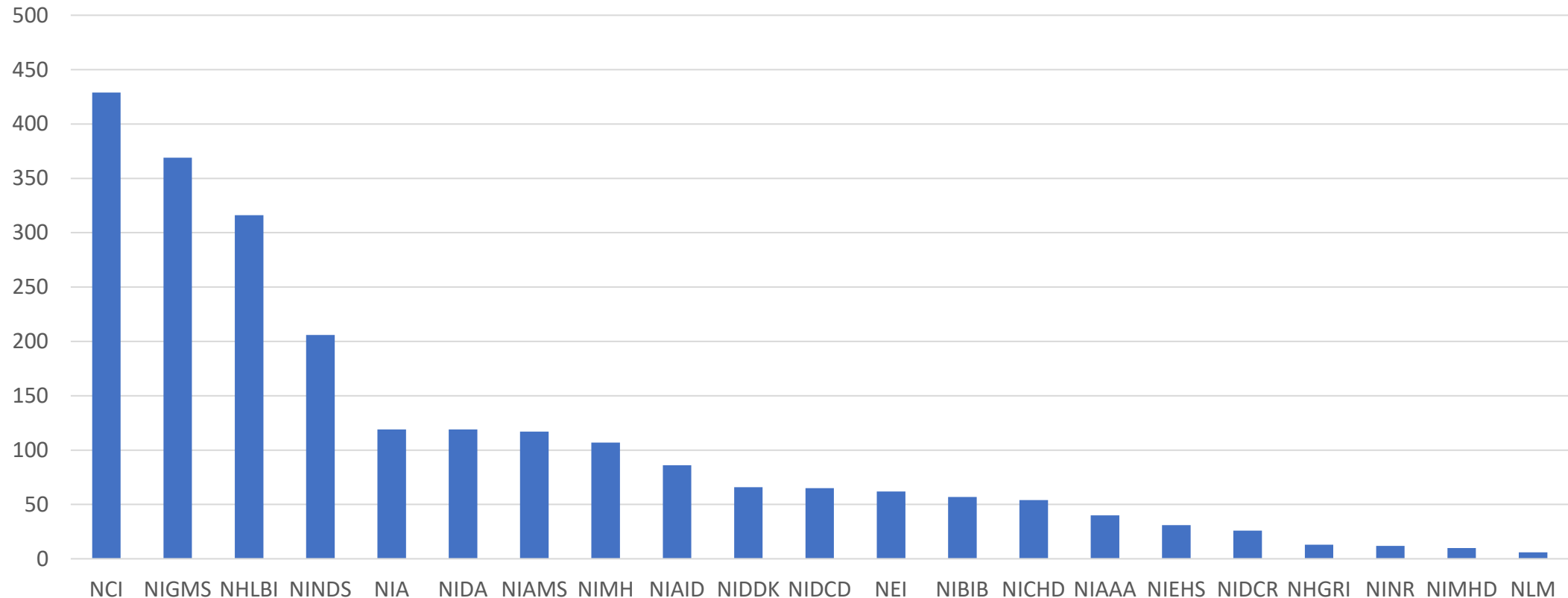




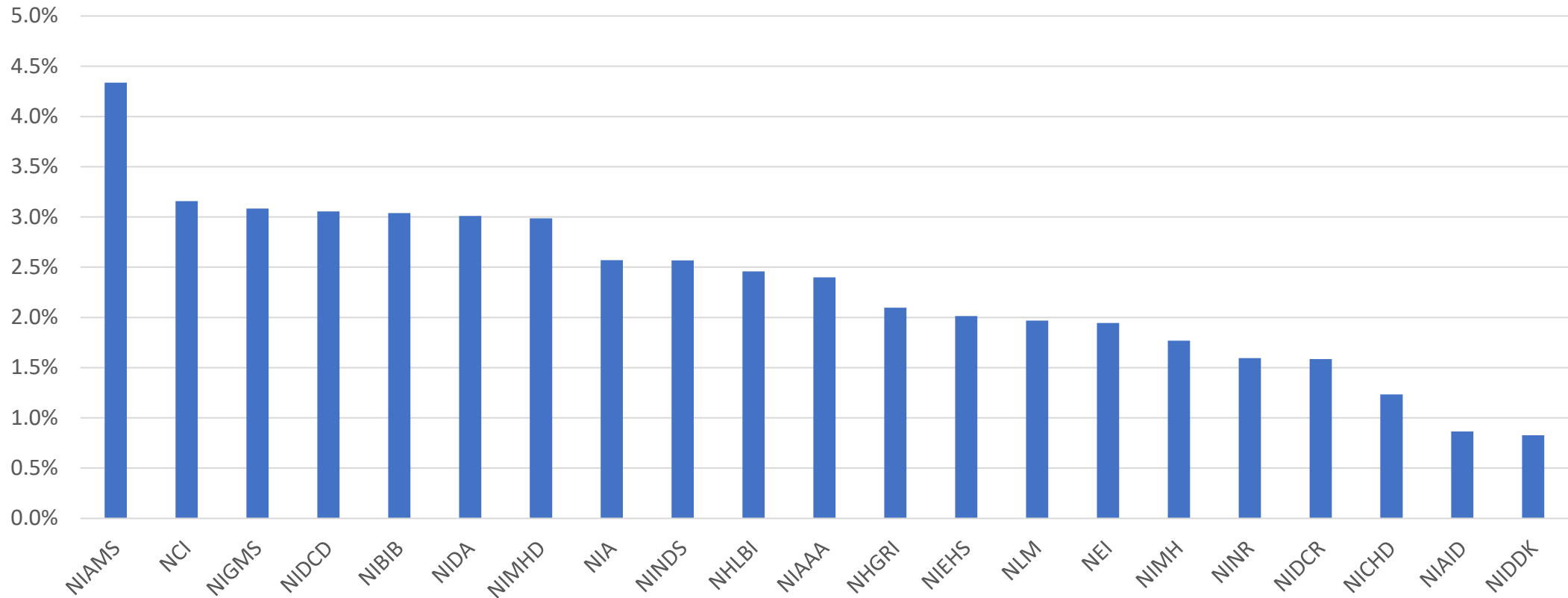
# Number of new R01-associated diversity supplements by fiscal year



# Number of new R01-associated diversity supplements from 2005-2020 by administering NIH institute



# Percentage of R01 grants with a diversity supplement from 2005-2020 by administering NIH institute





# Number of R01-associated diversity supplements by Principal Investigator



## **ANY SUPPLEMENT**

PIs: 2,084



## **THREE SUPPLEMENTS**

PIs: 8 (0.38%)



## **TWO SUPPLEMENTS**

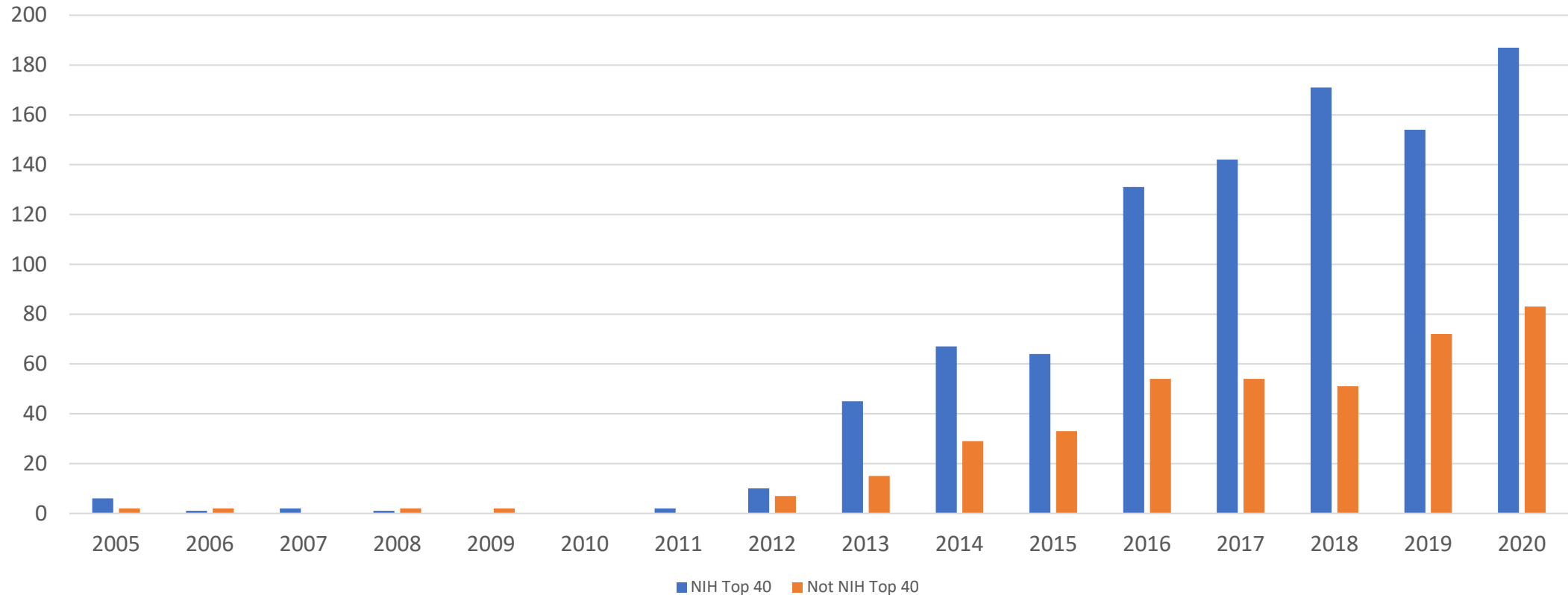
PIs: 67 (3.2%)



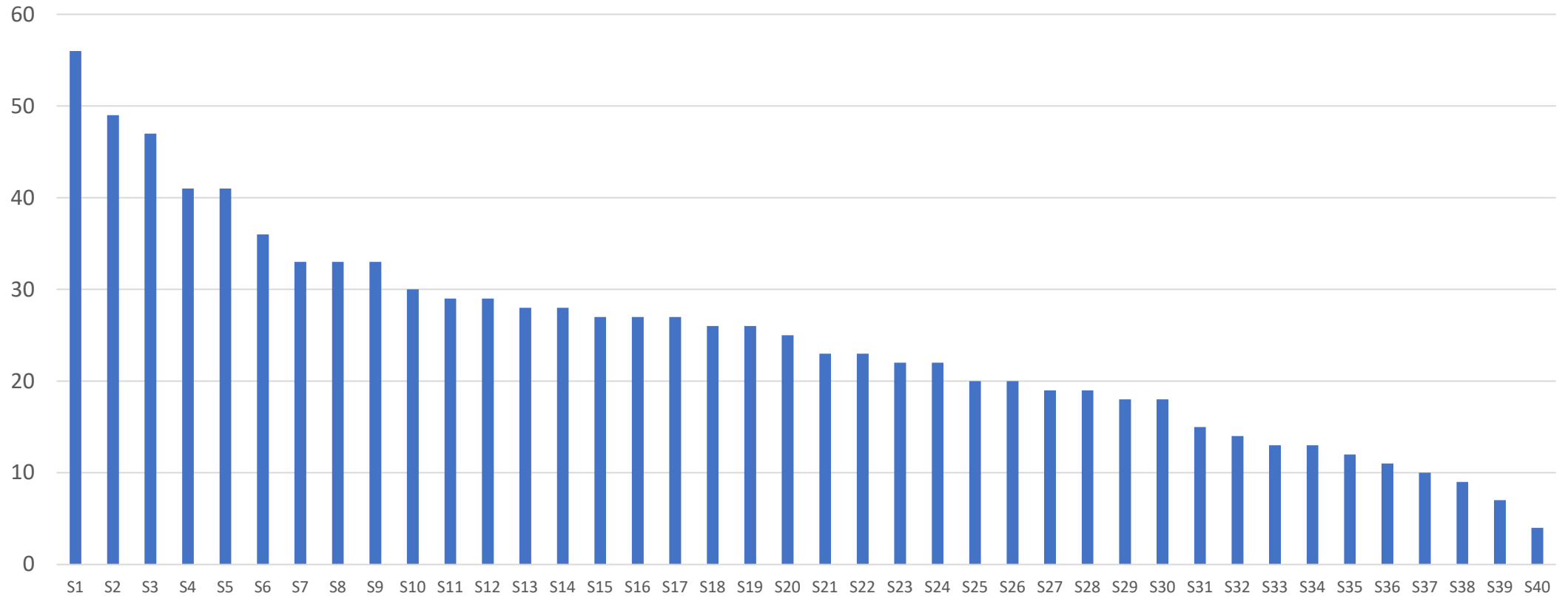
## **FOUR SUPPLEMENTS**

PIs: 1 (0.05%)

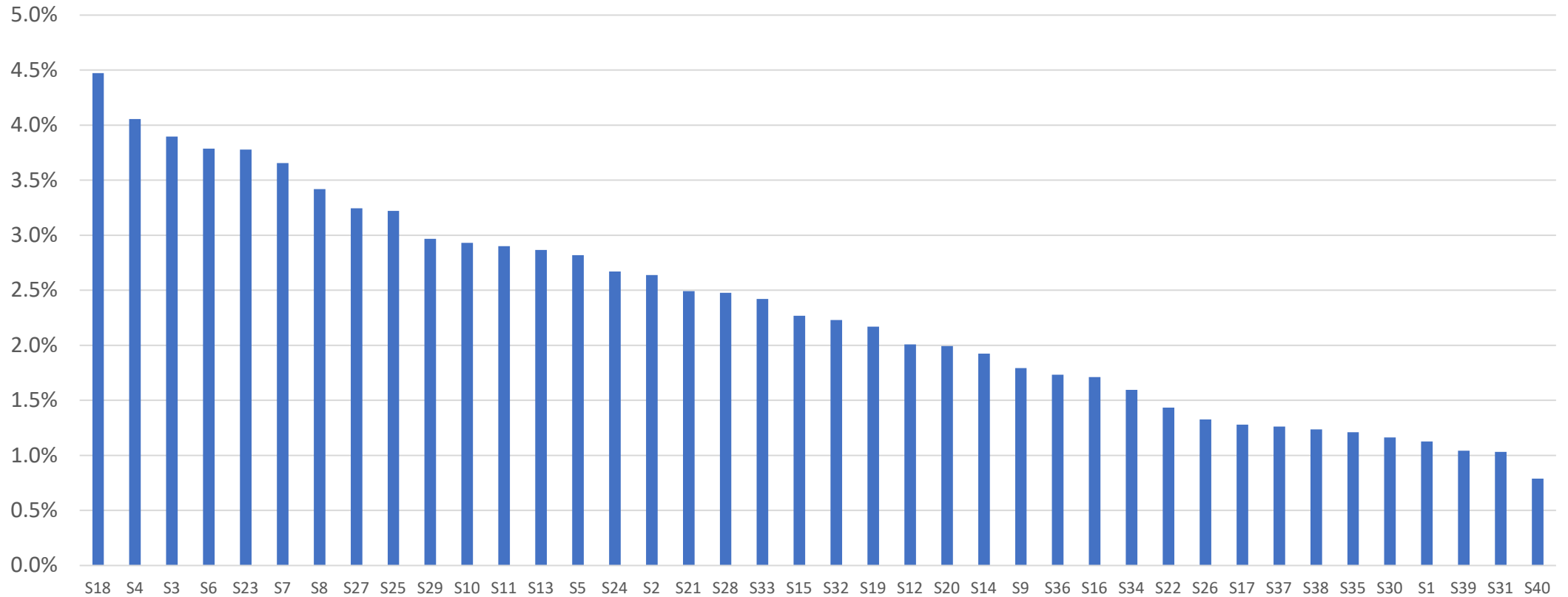
# Number of new R01-associated diversity supplements by fiscal year



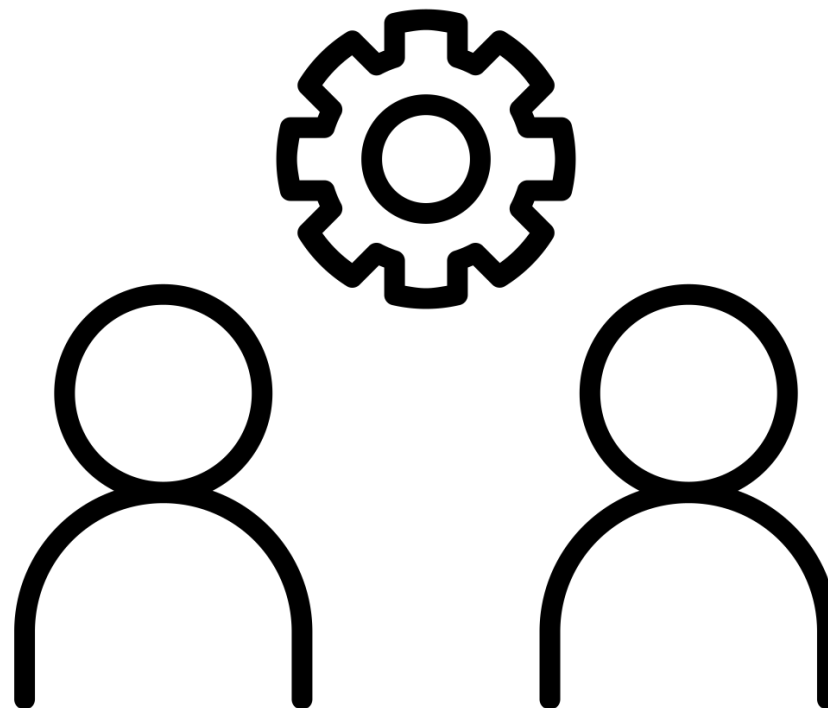
# Number of new R01-associated diversity supplements from 2005-2020 by medical school



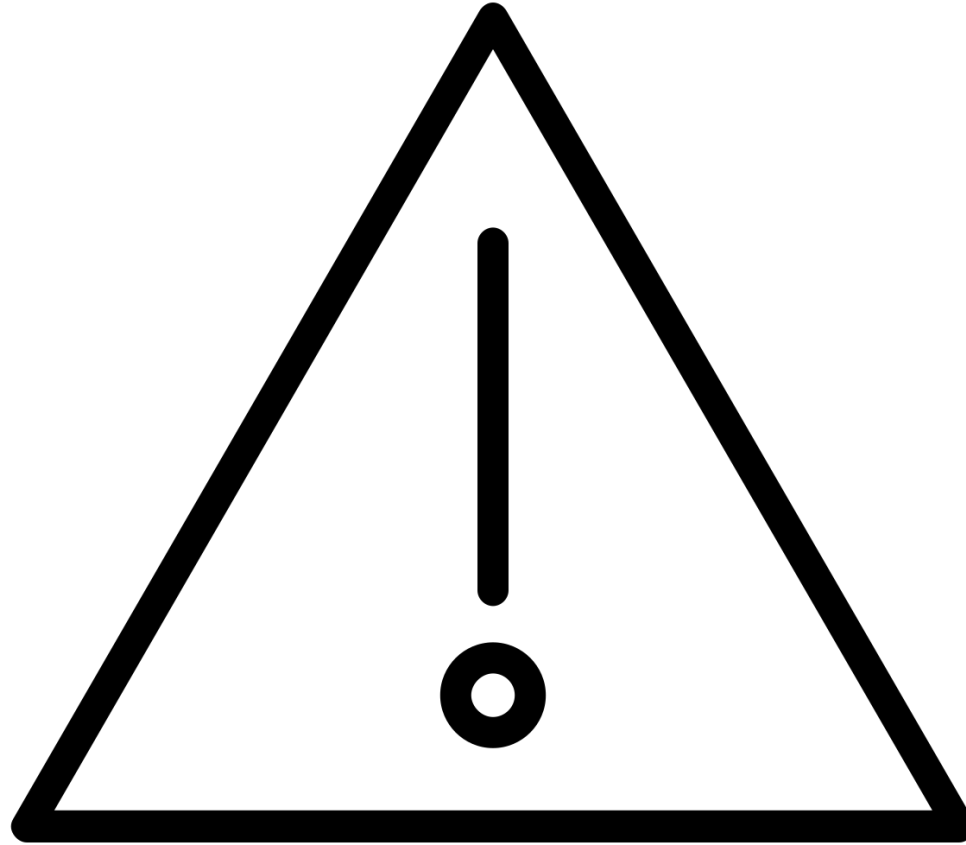
# Percentage of R01 grants with a diversity supplement from 2005-2020 by medical school



Discussion



Limitations



# Citations

- 1. National Institutes of Health. Initiatives for underrepresented minorities in biomedical research. Accessed September 18, 2021. [https://grants.nih.gov/grants/guide/historical/1989\\_04\\_21\\_Vol\\_18\\_No\\_14.pdf](https://grants.nih.gov/grants/guide/historical/1989_04_21_Vol_18_No_14.pdf)
- 2. National Institutes of Health. Research Supplements to Promote Diversity in Health-Related Research. Accessed September 18, 2021. <https://grants.nih.gov/grants/guide/pa-files/pa-20-222.html>
- 3. National Institutes of Health. Racial disparities in NIH funding. Accessed September 18, 2021. <https://diversity.nih.gov/building-evidence/racial-disparities-nih-funding>
- 4. Advisory Committee to the Director Working Group on Diversity in the Biomedical Research Workforce. *Draft Report of the Advisory Committee to the Director Working Group on Diversity in the Biomedical Research Workforce*. 2012:184. <https://acd.od.nih.gov/documents/reports/DiversityBiomedicalResearchWorkforceReport.pdf>
- 5. Ginther DK, Schaffer WT, Schnell J, et al. Race, ethnicity, and NIH research awards. *Science*. Aug 19 2011;333(6045):1015-9. doi:10.1126/science.1196783
- Valantine, H. A., Lund, P. K., & Gammie, A. E. (2016). From the NIH: A systems approach to increasing the diversity of the biomedical research workforce. *CBE—Life Sciences Education*, 15(3), fe4. <https://www.lifescied.org/doi/pdf/10.1187/cbe.16-03-0138>